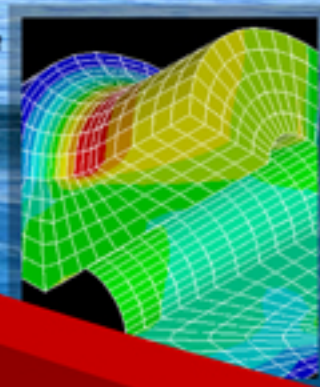




**Raj Metallurgical Services**

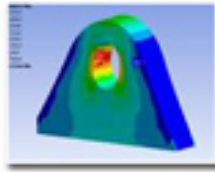


Integrated engineering services  
Onshore & offshore

Raj Metallurgical Services is a technology driven firm that infuses engineering with efficiency.

We offer a wide range of advanced solutions & services to a variety of user industries relating to;

- Oil & gas installations,
- Subsea piping,
- Deepwater mooring systems,
- Boilers & Pressure Vessels,
- Process plant equipments,
- Machine building,
- Automotive applications, etc.



We remain differentiated on the basis of our technological strengths and strong engineering skills which enables us to engage very closely with our customers on end-to-end engineering projects.

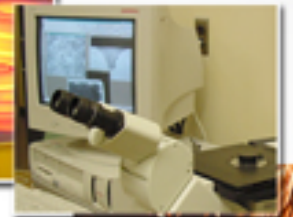
Our Quality Management Systems have been certified to ISO:9001-2008 by Det Norske Veritas B.V. (DNV) accredited by the United Kingdom Accreditation Services (UKAS)

With an international presence, our thrust on international business has seen us participate successfully in numerous projects worldwide.

Our challenging work environment brings out the best in our people. We offer a professional value system, and extensive opportunities for growth and personal development.

Our strengths...

- Rich domain knowledge,
- strict quality and information security standards,
- state-of-the-art Infrastructure &
- excellent project management skills...



## Metallurgical Consultancy Services

We offer expert mechanical and materials engineering services to industry, covering;

- Materials & Manufacturing processes
- Welding technology & process control
- Metallurgical Failure Investigations
- Product development

## Engineering Design & Analysis Services

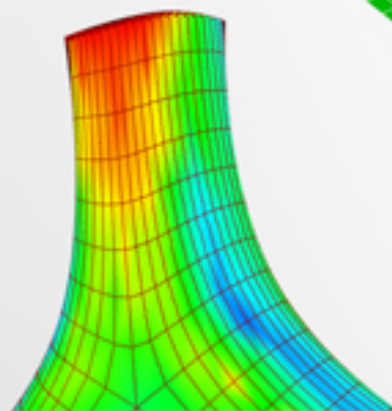
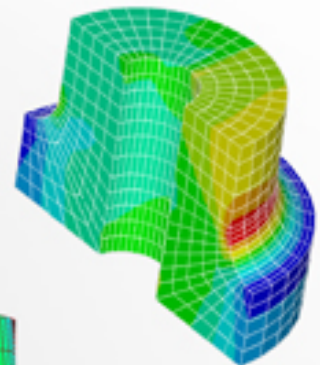
RajMet specializes in IT enabled engineering services, using state of the art design & analysis tools. We offer an extensive range of value-added design and engineering services that complement our complete end-to-end manufacturing strategy. Our design and engineering teams bring value to the product development process, working at virtually every stage of the design cycle, from concept through design and prototyping to production.

### Engineering Design Services

- 3D Modeling & Detailing
- Data Conversion / Legacy conversion
- Reverse Engineering
- Value Engineering: Weight reduction / process optimization
- Product / process re-engineering
- Prototyping
- Surfacing
- Body-in-White (BIW)
- Animation & Visualization

### Engineering Analyses

- Finite Element Meshing
- Finite Element Analysis (FEA)
- Structural Analysis: Linear & Non-Linear Analysis
- Dynamic Analysis
- Thermal and Coupled-field Analysis
- Life Estimation/ Fatigue life calculations
- Process Simulation
- Mechanism Simulation
- Product life cycle management







## Quality Management Services

We provide expert Inspection, Verification, Testing and Conformity Assessment services to customers around the world. Our teams of Source Inspectors, Engineers & Auditors ensure that the quality and performance of products or installations meet applicable requirements, whether they are regulatory, voluntary or client specific. Inspection is carried out in accordance with the rules and guidelines laid down by various international standards & specifications such as: ASME, ASTM, AWS, API, DIN, BS, JIS, NACE, Norsok, etc.

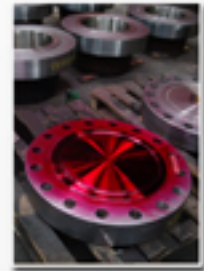
### Quality Control

- Metallurgical Testing & Certification
- Non Destructive Testing & Evaluation
- Witness Inspection
- Vendor surveillance



### Quality Assurance

- Developing, implementing & auditing quality systems per ISO 9001;
- Preparing quality manuals, procedures & work Instructions;
- Developing inspection & test plans, technical standards & specifications,
- Developing & monitoring equipment calibration standards,
- Supplier assessment audits,
- Desk audits



## Project Management Services

RajMet brings robust project management methodology to onshore & offshore projects.

We assist in defining project requirements & specifications, construction monitoring, materials procurement, regulatory interfacing and quality control and assurance.

We provide expert support in Vendor development, Customer-Vendor liaison, Project meetings, Site health & safety reviews, Progress reporting, Trouble shooting, Expediting, Load surveys, Transportation & Load-outs. A typical RajMet team comprises members who are skilled in the areas of process design, materials engineering & mechanical engineering and also have managerial skills covering budget control, planning, document control, class society liaison, client representation and project management. From our in-house resource pools we are able to create an integrated team that represents the best interests of the client throughout the construction period, including trials and delivery protocol. Prior to mobilisation on site, RajMet can perform plan reviews on behalf of clients to ensure that the unit to be built is fit for purpose and complies with all requirements, specifications and regulations. This integrated service is not only cost-effective but assures continuity of knowledge throughout the project.





Corporate Head Office  
**Raj Metallurgical Services**  
Deep Heights, Nagar Road,  
Ramwadi, Pune 411014. India.